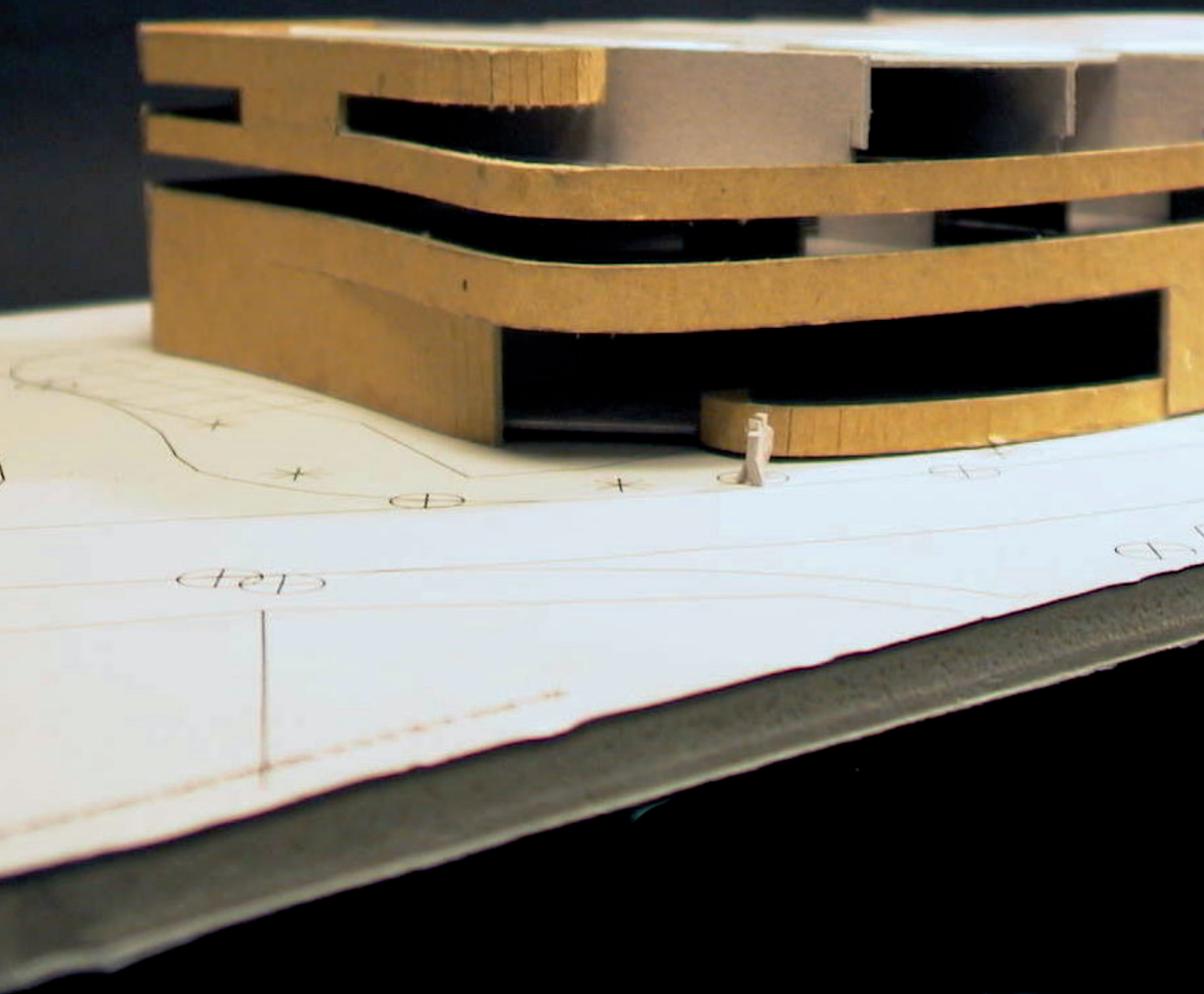
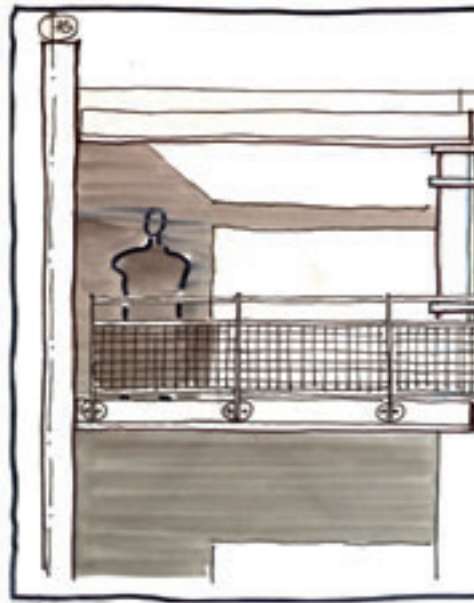
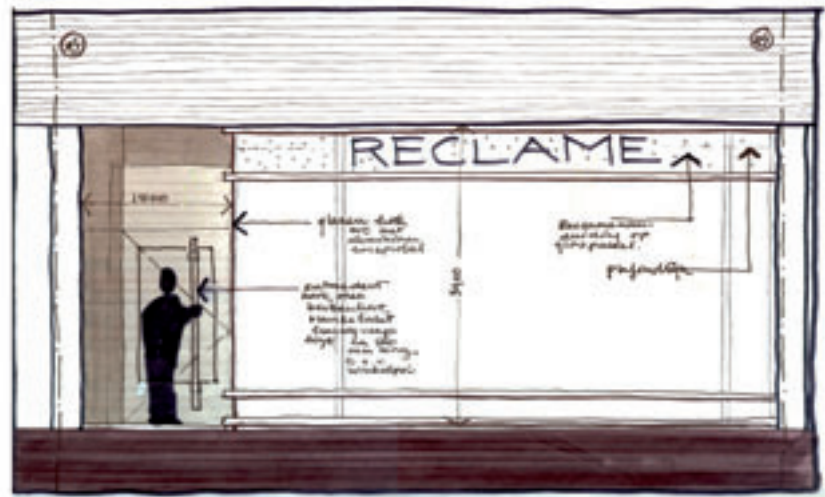
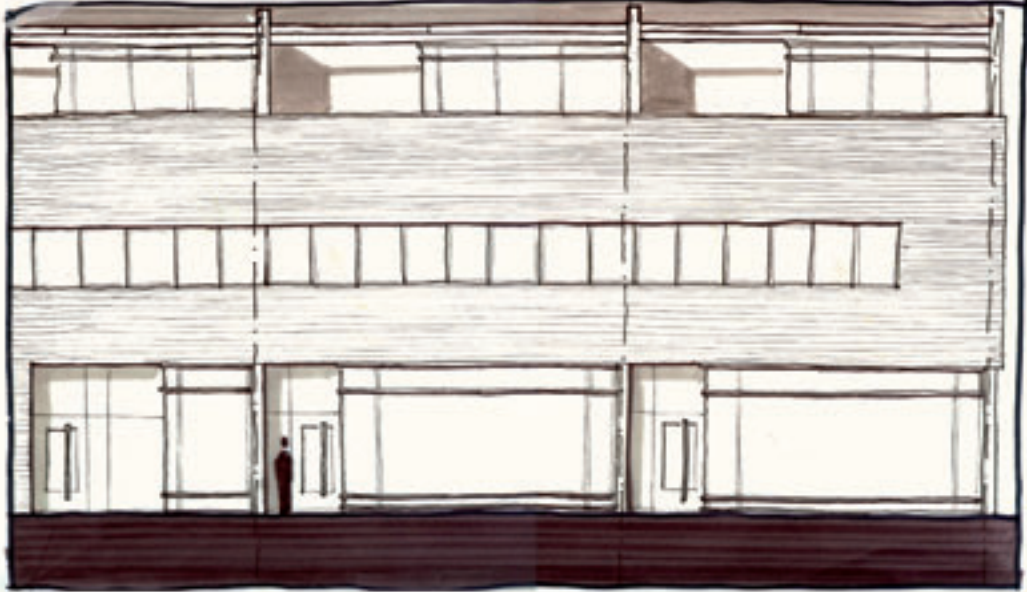


"Carpe Diem,
quam minimum credula

Horatius 658



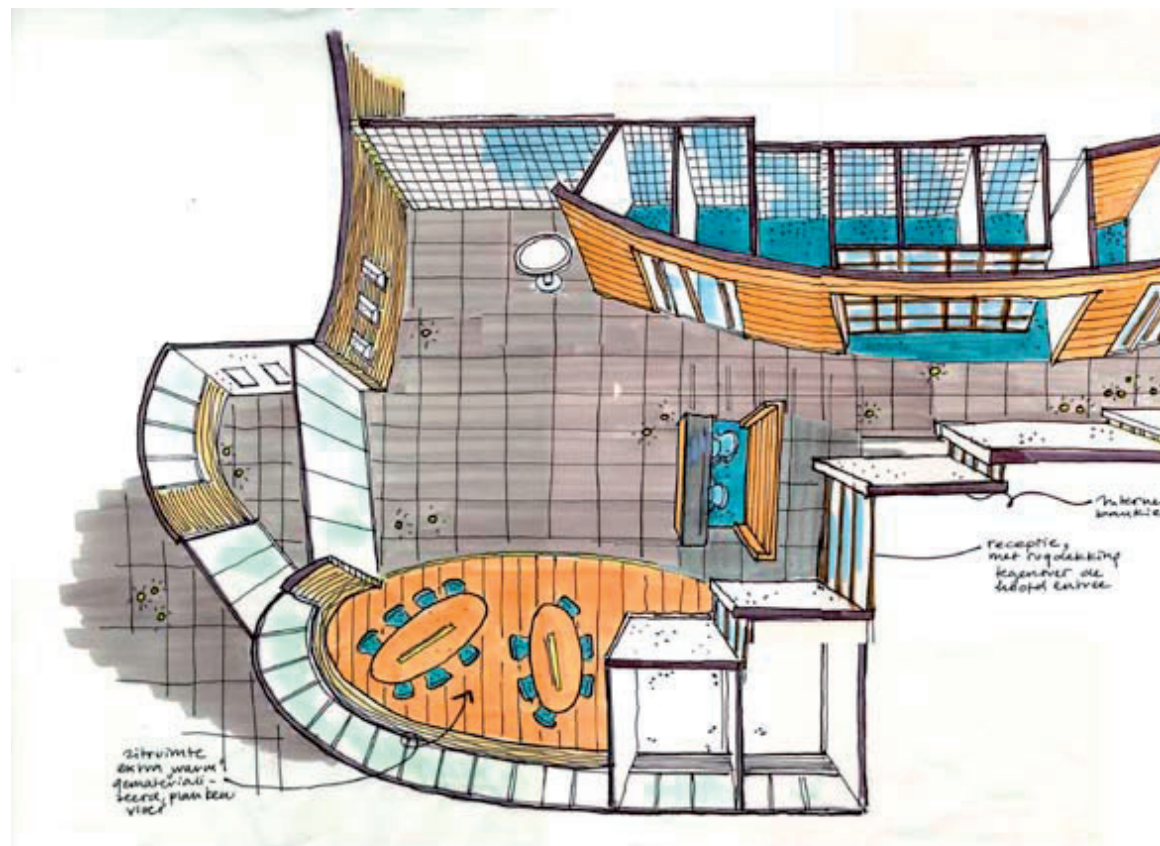


























Stationsweg
Station



Rabobank







 Rabobank





























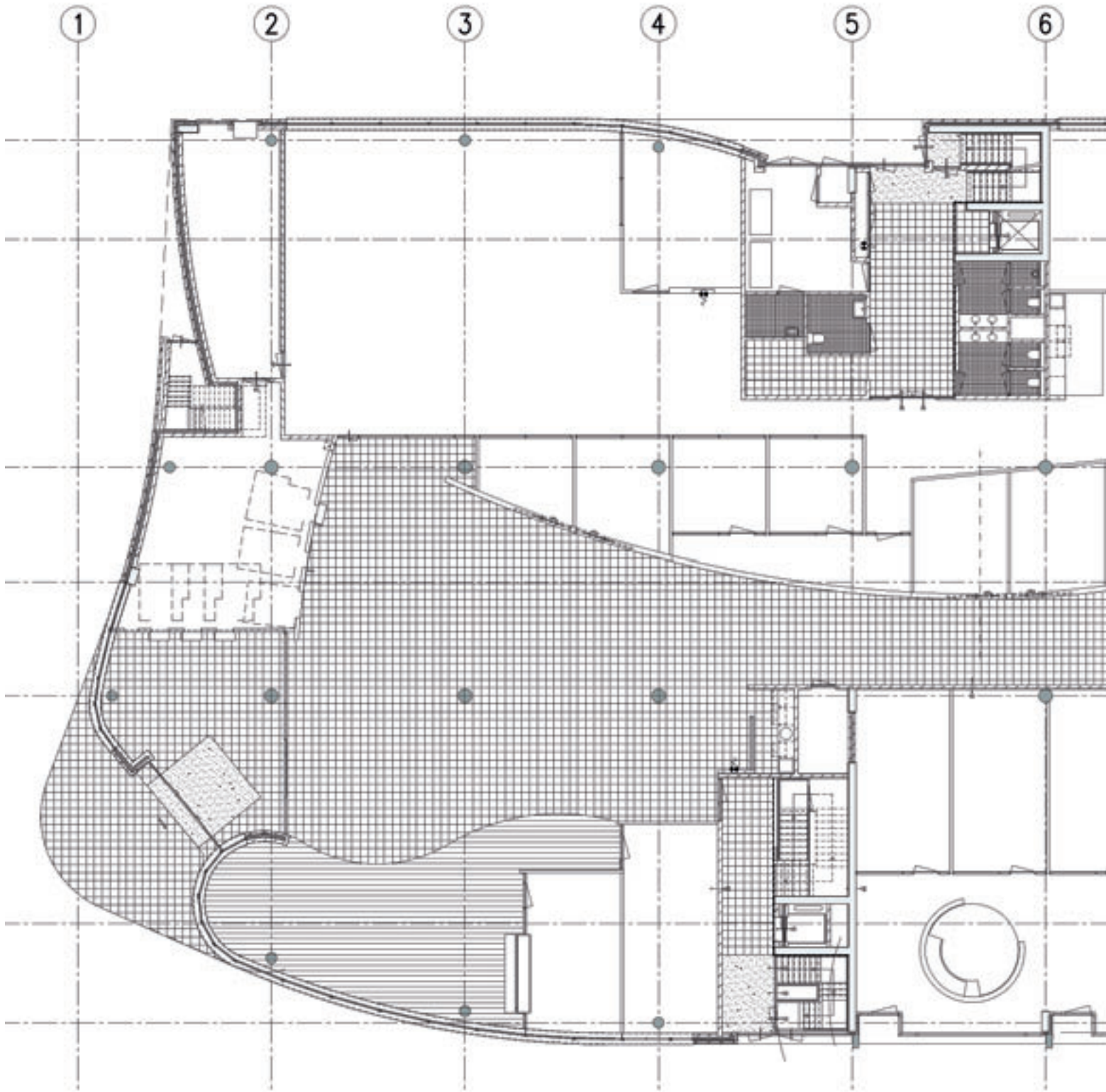


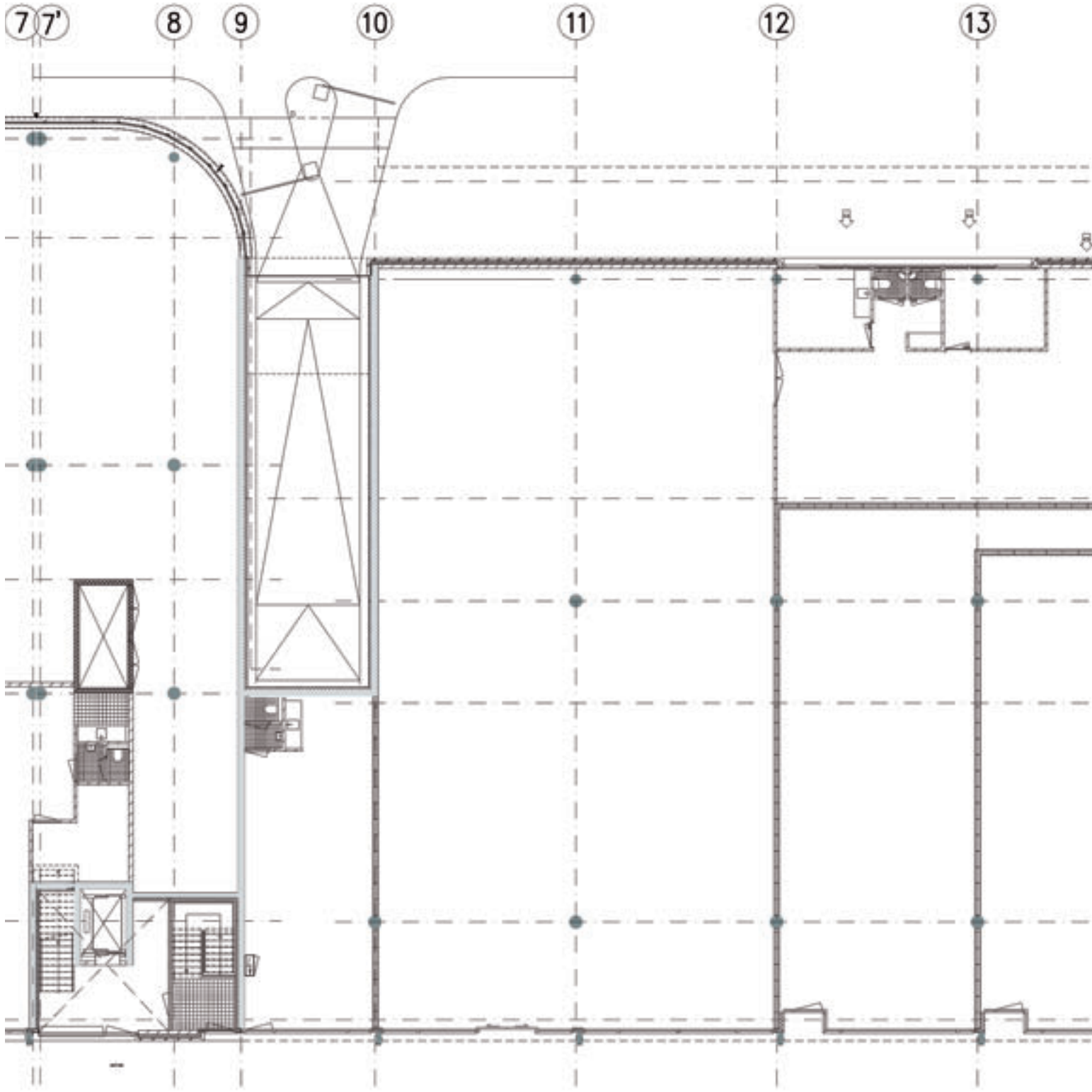




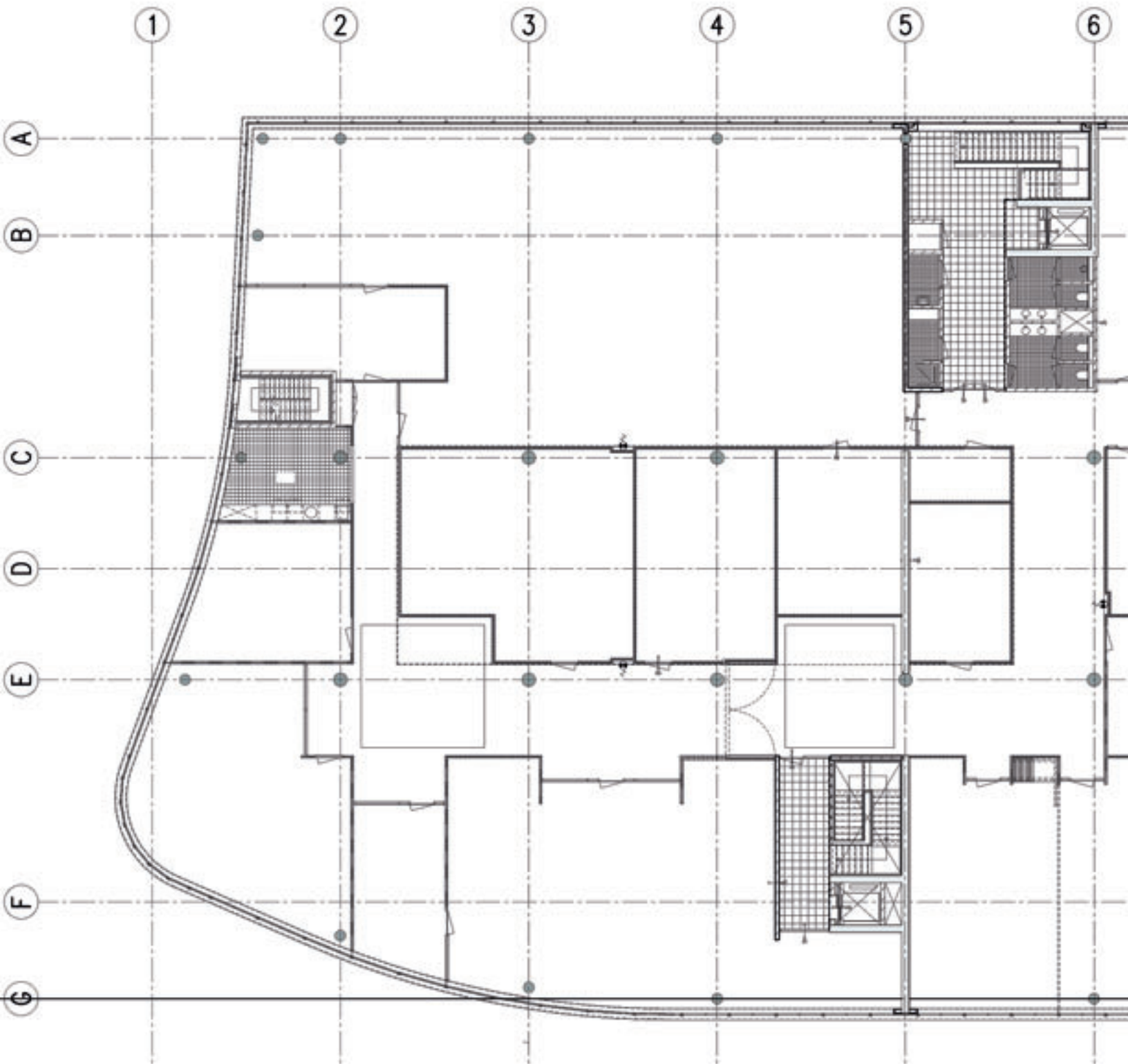


41-11





platte



7/7'

8

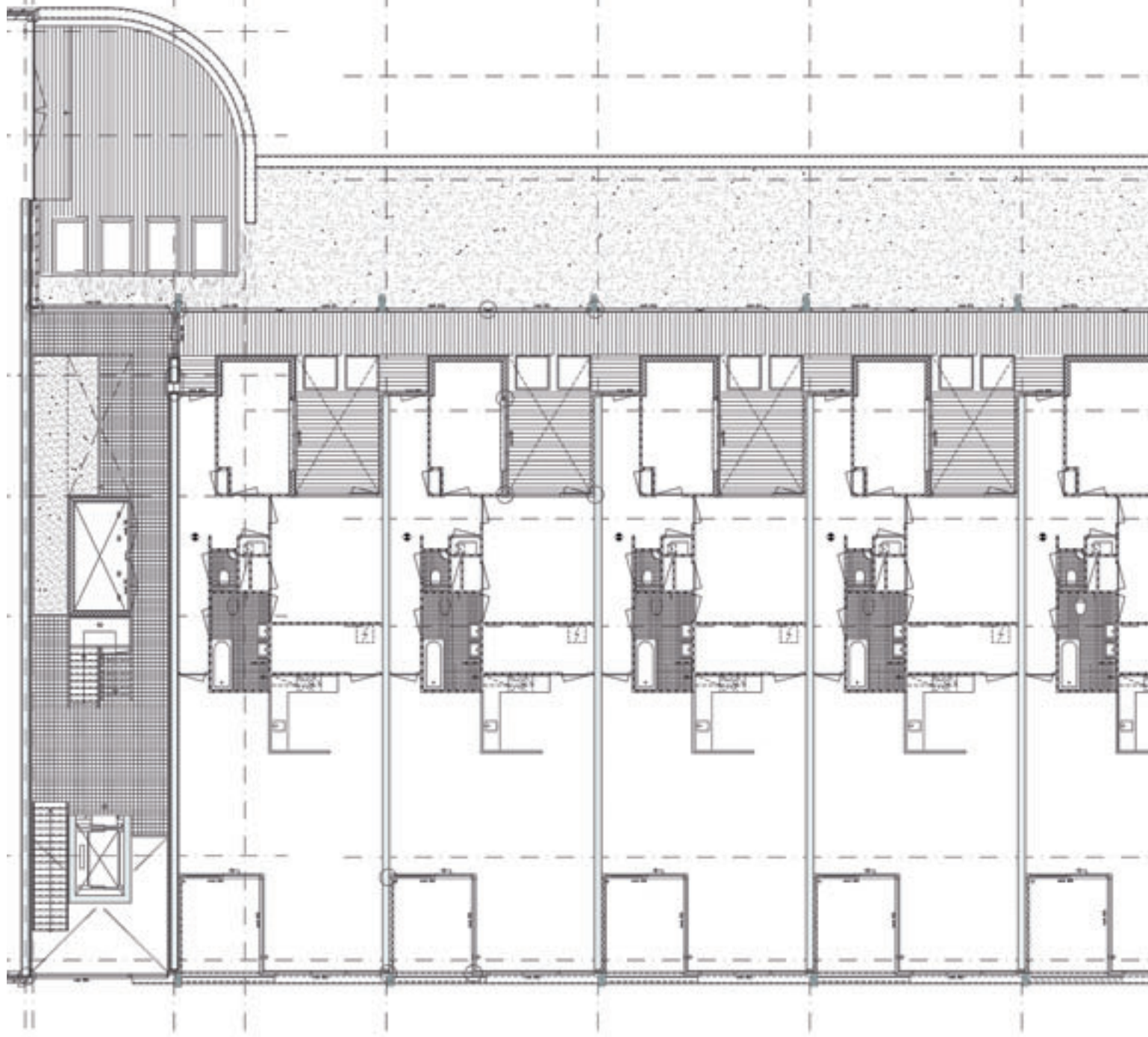
9

10

11

12

13



platt

1

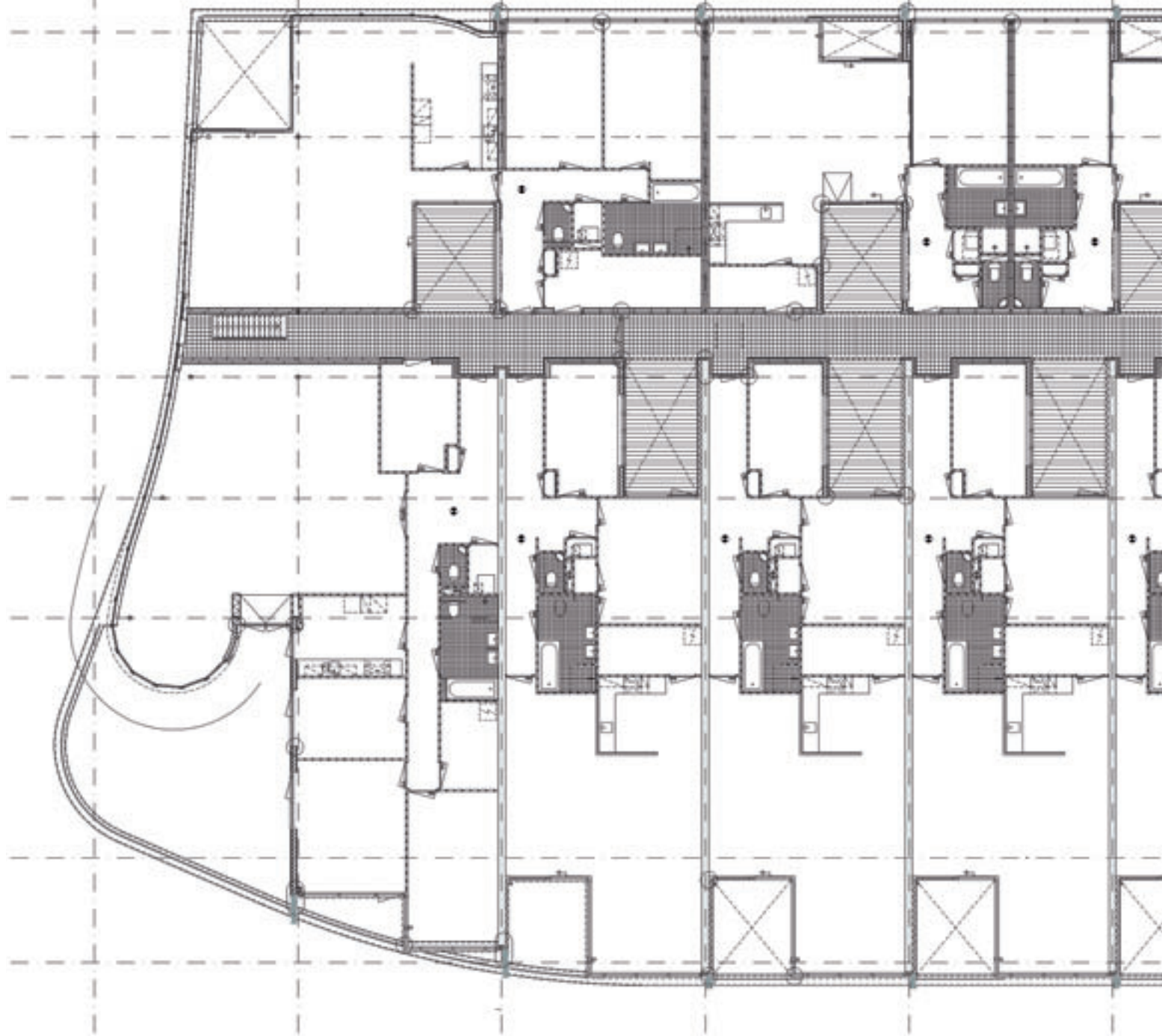
2

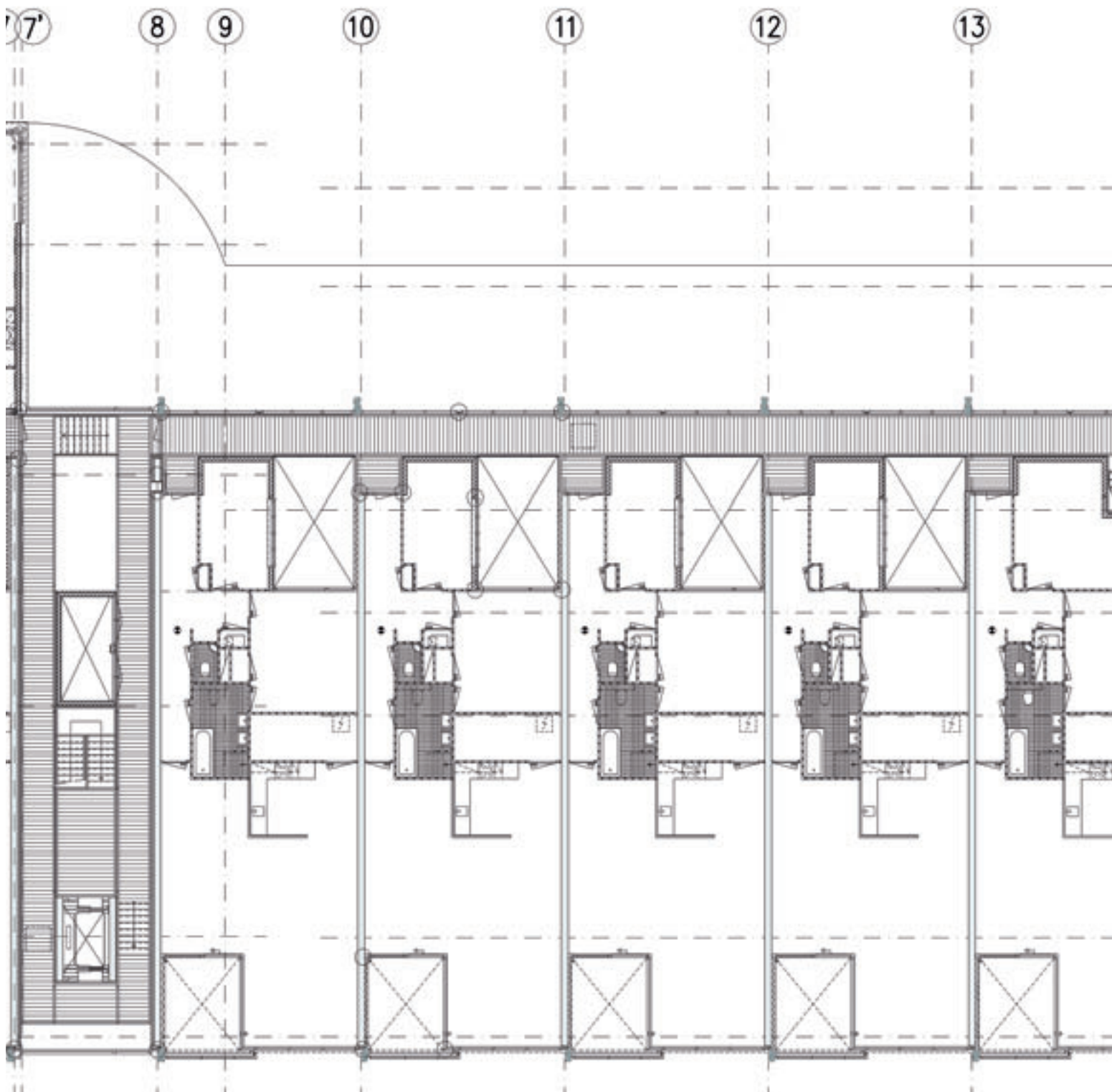
3

4

5

6





platt



Ontwerp:

Inbo architecten bna, Amsterdam
Postbus 967
1000 AZ, Amsterdam
020-4212422
amsterdam@inbo.com

Projectteam Inbo:

Jan de Lussanet
Jan Hoedemaker
Edwin Dijkhuis
Jaco Troost
Alena Ulasava
Marc Wieringa
Sjouke Vink
Teun de Vries

Opdrachtgever:

W-2 Projecten, Didam

Hoofdgebruiker:

Rabobank Didam

Projectmanagement Bank:

Van Kessel en Janssen, Beuningen

Aannemer:

Aannemingsmaatschappij Wel

Constructeur:

Raadgevend Ingenieursbureau

Installaties:

Bongers / Jansen, Gaanderen

Kunstenaar:

Leo van Oudheusden, Didam

Fotografie:

Thea van den Heuvel, Nijmegen

“Pluk de dag

vertrouw zo min mogelijk o



www.inbo.com